

AUGUST 2006



NEED MORE HEIFERS?



MORE HEIFERS ARE POSSIBLE

What producers are saying...

When the Smith's, Comer, Ga., chose to expand their Holstein dairy herd from 900 to 1200 cows, they turned to *gender* SELECTed semen to get more heifers. "We've been able to keep the herd closed and expand at the same time," said Jeff Smith. "Using *gender* SELECTed semen is one of the best things we've ever done. We've gotten good conception and have had just about 99 percent heifers."

The Smith's conception rate is 60 to 65 percent with *gender* SELECTed semen and is achieved by cautious breeding. "You can't use sexed semen like regular semen," says Jeff. "We watch heats 24 hours a day and breed at 2AM if needed. If a heifer doesn't show a strong heat, we use conventional semen." The Smith's initially purchased 184 units of *gender* SELECTed semen and 118 heifer calves were born. "*gender* SELECTed semen is having a tremendous impact on our herd and we couldn't be happier," says Jeff Smith.

Ron Kutz, owner of Kutz Dairy LLC, Jefferson, Wis., currently milks 850 Jersey cows. He will be the first to tell you that Jersey bull calves aren't worth much, so the advantages of using *gender* SELECTed semen is worth the cost. On his trial run with the product the results were less than desirable, but those results didn't deter him. "We've been interested in sexed semen for our Jersey herd since we heard about it years ago," says Kutz. "We couldn't wait to try it. 7JE576 O.F. Montana SAWYER-ET worked great and our conception rate is very acceptable. I'm currently using 9JE202 O.F. Barber ROCKET and 7JE613 Blackys BIG TIME-ET, and can't wait for additional sires to become available."

East Central Select Sires A.I. technician, Steve Kacuba, tail chalks all the heifers and watches for visual signs

of heat. On the first two services, Steve breeds the heifers with *gender* SELECTed semen and on any further services uses conventional semen.

"We don't like buying cattle from multiple herds and trying to transition them to our management style," says Kutz. "We'd prefer to breed, raise and milk our own replacements and *gender* SELECTed semen is helping us do just that."

We were excited to test this promising product," says Ethan Myers, herd manager, Myers Farms Inc., Union Grove, N.C. "We've been using *gender* SELECTed semen for over a year now and we can see it is worth the investment. Our conception rates may be lower, but it is still acceptable and we've got more heifers."

Myers and his family milk 840 Holstein cows. Ethan's mother and one employee watch for visual heats in the heifer pens and breed accordingly. Every heifer is bred to *gender* SELECTed semen on the first two services and then conventional semen on all other services. The Myers' herd has used 12 different *gender* SELECTed bulls and are excited about the new bulls being added to the lineup.

"Our goal is to grow from within," states Myers. "We haven't purchased any replacements in the last two years with the hope to never buy another animal again and we would like to do more voluntary culling. We see *gender* SELECTed semen as a way to achieve these goals."



507H06782 ZENITH

gender 
SELECTed™

WITH *gender* SELECTed SEMEN

Keys to Success

Use of *gender* SELECTed semen will require a breeding gun designed to accommodate the smaller diameter ¼-cc straws. Straws are to be thawed and handled identical to their ½-cc counterparts. However, the smaller diameter and compromised semen quality will make them much more sensitive to cold shock and errors in semen handling. To maximize potential for success:

- ◆ Thaw straws in 95°F water bath for 45 seconds.
- ◆ Semen thawing and handling environments should be warm and draft free.
- ◆ Warm all semen handling equipment including guns, sheaths, and paper towels prior to contacting straws.
- ◆ Only highly experienced technicians should use this product.
- ◆ Use only in well-managed, **virgin heifers** that have achieved greater than 60 percent of their mature weight by 14 months and are in moderate or better body condition.
- ◆ Inseminate heifers eight to 12 hours after observed estrus (AM/PM Rule). Once-a-day A.I. programs are not conducive to optimum results.
- ◆ Use of estrus synchronization and breeding to observed estrus is encouraged, but use of timed-A.I. in the absence of observed estrus is discouraged.

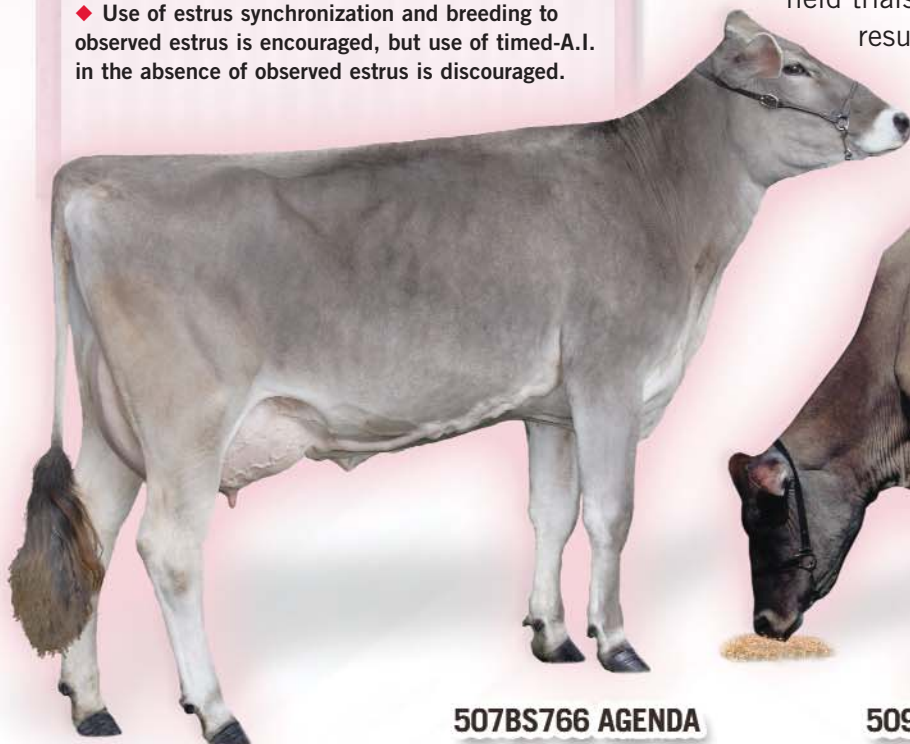
More research...more selection...more heifers!

Select Sires can now provide highly proven *gender* SELECTed sires. No other A.I. company offers such an expansive lineup of elite proven sires in the Holstein, Jersey and Brown Swiss breeds. Our growing list of *gender* SELECTed bulls are backed by industry-leading research and experience. We understand the value of a heifer calf to your bottom line, and since 2001 we've been working to make *gender* SELECTed sires a reality. After extensive field trials, the results are in and the

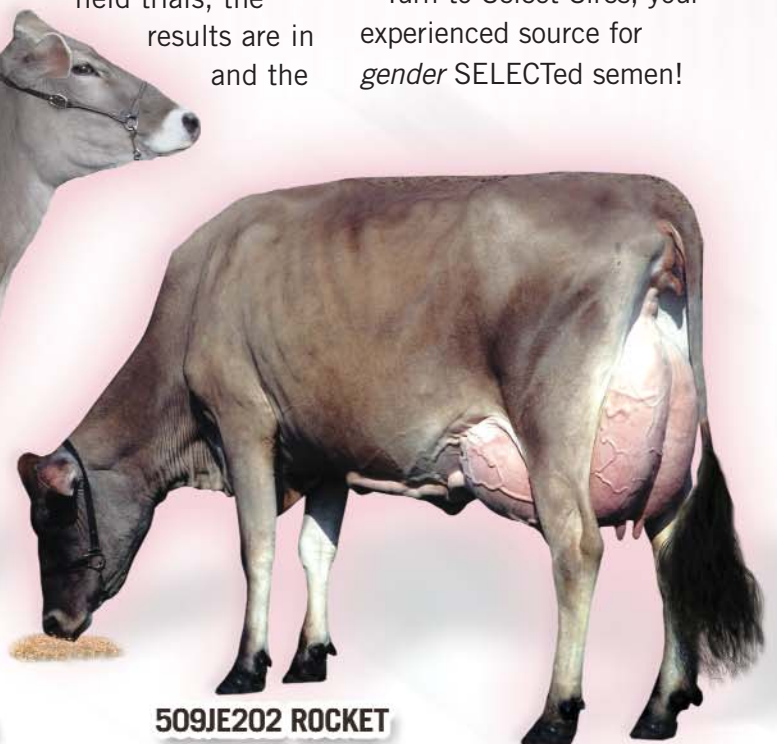
gender  SELECTed™

facts prove our technology can sex-sort sperm with 90 percent purity. Wouldn't you be tickled pink to get 9 heifers out of every 10 calves? Producers who pay strict attention to the details of semen handling and timing of inseminations in well-managed virgin heifers are pleased with the results.

Turn to Select Sires, your experienced source for *gender* SELECTed semen!



507BS766 AGENDA



509JE202 ROCKET

NEED MORE HEIFERS?

It's possible with these high-quality sires, including several Top-100 TPI!

Code No. & Name	Milk	Fat		Prot.		Yield Rel.%	SCS	PL	DPR	Type	UDC	FLC	Rel. %	%DBH		TPI™
		%	Fat	%	Prot.									CE	Rel. %	
507HO6055 BRIGHT	+897	-0.11	+5	-0.02	+21	95 U	2.73	+4.7	+1.5	+0.95	+0.56	+0.90	88 U	6	98	1499
507HO6302 READY ♣	+218	+0.10	+33	+0.10	+32	95 U	2.95	-0.3	-0.1	+1.51	+0.79	+0.43	85 U	7	99	1489
507HO6349 BEST ♣	+561	+0.13	+54	+0.04	+29	98 U	3.24	-0.8	-0.9	+1.48	+1.33	+1.96	93 U	8	99	1522
507HO6546 REMINGTON	+1,548	+0.04	+68	+0.00	+47	85 U	3.17	+3.1	-0.4	+1.00	+2.03	-1.03	80 U	7	88	1722
507HO6682 MARMAX ♣	+1,915	-0.14	+30	-0.04	+48	98 M	3.16	+0.3	+0.1	+1.05	+0.59	+2.01	94 U	9	99	1551
507HO6685 BRYCE	+942	+0.02	+41	+0.00	+28	89 U	2.91	-0.5	-0.5	+1.28	+1.00	-0.27	84 U	7	92	1461
507HO6695 LC ♣	+1,179	+0.21	+101	+0.01	+39	90 U	2.94	+0.3	-0.7	+0.81	+0.66	+0.74	85 U	6	97	1690
507HO6753 CANYON ♣	+1,150	-0.03	+34	-0.05	+22	99 M	2.84	+0.0	-2.1	+1.54	+0.94	+0.78	98 M	8	99	1427
507HO6759 MORGAN	+854	+0.03	+40	+0.00	+25	96 U	2.54	+1.0	-0.8	+1.05	+1.23	+1.30	92 U	6	97	1592
507HO6782 ZENITH ♣	+314	+0.09	+35	+0.04	+20	99 M	2.61	+3.6	+1.6	+1.42	+2.04	+0.30	97 M	7	99	1647
507HO6838 MATCHES ♣	+1,666	-0.02	+56	-0.04	+39	86 U	2.61	+2.2	+0.5	+1.32	+1.02	+0.13	84 U	7	74	1713
507HO7043 DISON ♣	+1,566	-0.14	+19	-0.01	+45	89 U	2.68	+2.0	+1.1	+1.10	+1.45	+0.81	87 U	8	73	1664
507HO7135 DAKOTA ♣	+1,097	-0.16	-4	-0.05	+21	96 U	3.14	+1.1	+0.3	+1.83	+1.75	+2.01	93 U	7	86	1451
507HO7145 CASIMIR ♣	+1,725	-0.05	+49	-0.07	+32	89 U	2.67	+3.7	+0.4	+0.72	+0.54	+1.08	88 U	8	70	1629
507HO7173 ROLEX ♣	+865	+0.11	+62	+0.04	+37	92 U	2.78	+1.7	-1.7	+0.84	+1.15	+1.44	88 U	7	78	1647
507HO7285 HHF ♣	+683	+0.02	+31	+0.01	+24	88 U	2.97	+0.4	+0.5	+1.80	+1.69	+1.54	85 U	8	75	1558
507HO7379 G-TAURUS ♣	+1,551	+0.00	+57	-0.04	+35	86 U	2.84	+1.3	-0.9	+1.64	+1.11	+2.47	84 U	7	72	1681
507HO7466 MOSCOW ♣	+1,444	-0.14	+15	-0.07	+25	94 U	2.65	+1.8	-0.1	+1.57	+1.75	+1.92	90 U	7	87	1569
509HO2763 FARADAY	+963	-0.06	+20	+0.06	+46	89 U	2.77	-0.3	-1.4	+0.98	+0.20	+1.82	85 U	9	92	1516
509HO2831 DUCE ♣	+832	+0.05	+42	+0.00	+26	91 U	2.63	+3.1	+0.2	+0.91	+1.38	+0.74	87 U	7	97	1620
																JPI™
507JE 590 ACTION ♣	+695	-0.05	+23	-0.03	+20	88 U	3.08	+3.6	+0.6	+2.20	NA	NA	77 U	NA	NA	140
507JE 613 BIG TIME	-199	+0.24	+35	+0.09	+8	98 M	2.88	-0.8	-0.7	+1.30	NA	NA	95 M	NA	NA	65
507JE 667 JACINTO ♣	+693	+0.07	+45	+0.07	+37	84 U	2.97	+3.0	+0.4	+1.50	NA	NA	70 U	NA	NA	204
509JE 202 ROCKET ♣	+594	-0.01	+26	+0.02	+25	90 U	2.80	+0.4	-0.4	+1.80	NA	NA	80 U	NA	NA	133
																PTI
507BS 758 POLLYDEN ♣	+1,622	-0.04	+56	+0.01	+57	80 U	2.84	+0.8	-0.9	+0.50	-0.12	+0.09	74 U	6	69	229
507BS 761 POLO ♣	+706	+0.01	+31	+0.01	+26	85 M	2.99	+2.1	+0.1	+0.50	+0.20	+0.29	72 M	4	63	122
507BS 766 AGENDA ♣	+878	+0.15	+70	+0.06	+42	84 M	2.82	+2.4	-0.4	+0.70	+0.52	+0.20	77 M	5	64	219
507GU414 NASH ♣	This exciting Super Sampler™ is a top-index young sire backed by a tremendous family with modern-day performance and All-American results.															

* Denotes sires eligible for semen export to Canada. ™gender SELECTed & Super Sampler are trademarks of Select Sires Inc.; TPI is a trademark of Holstein Association USA; JPI is a trademark of the American Jersey Cattle Association. 08/06 USDA, Breed Association Type data & IB-M. Product of the USA 55936-7M-CJB-0806



Ask your Select Sires Representative for all the facts!
Phone (614) 873-4683 Fax (614) 873-5751 www.selectsires.com

